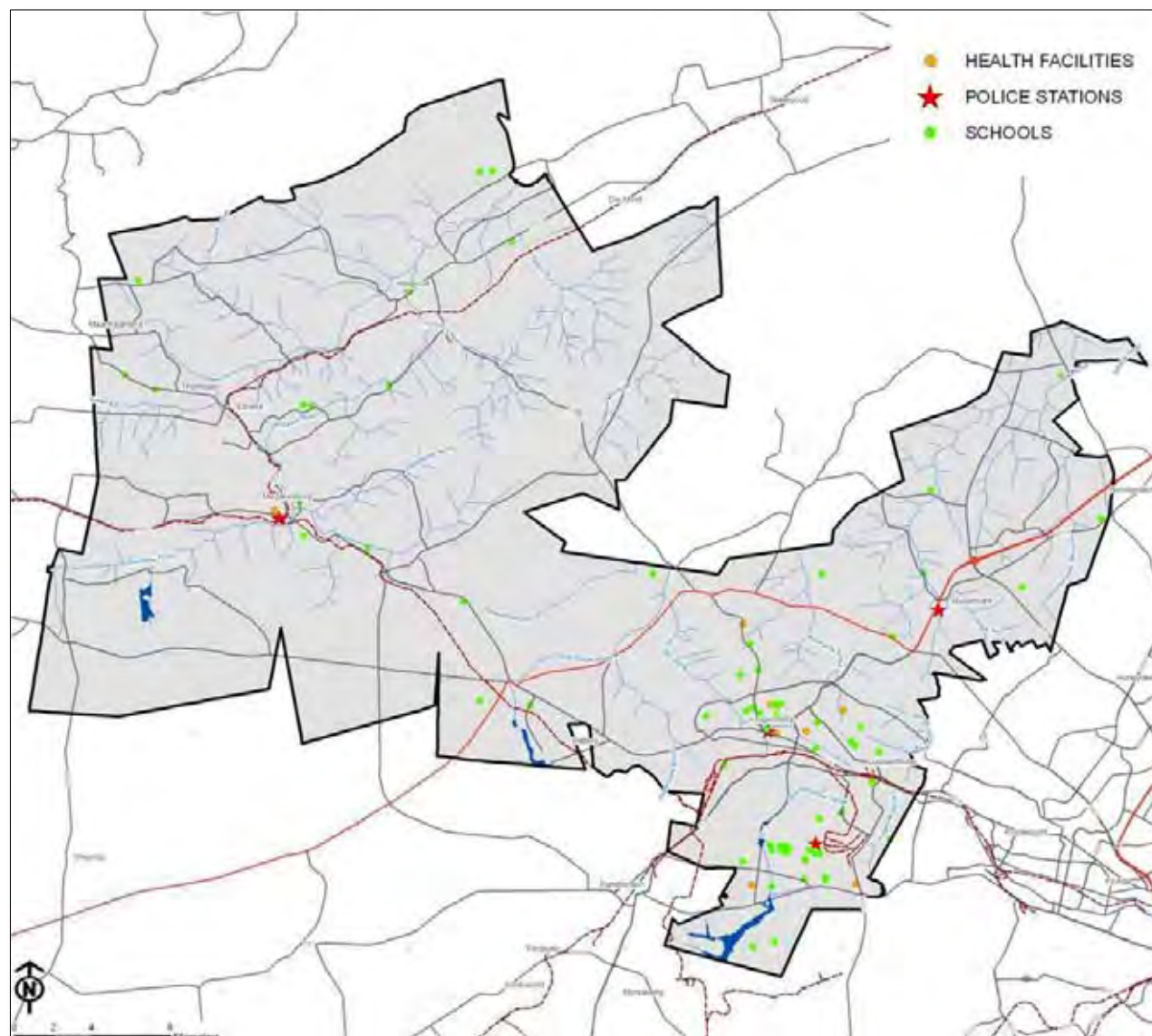


9. Social services

Access to social facilities plays an important role in local development. The spatial system in Mogale City is well established and has developed over many years. It is not possible to determine the nature of the needs for schools, clinic, etc. In this assessment the emphasis is on the quantitative aspects or specifically the access of communities to these services. Map 34 shows the general distribution of these facilities throughout the municipal area.



Map 34: Distribution of social facilities

9.1 Access to schools

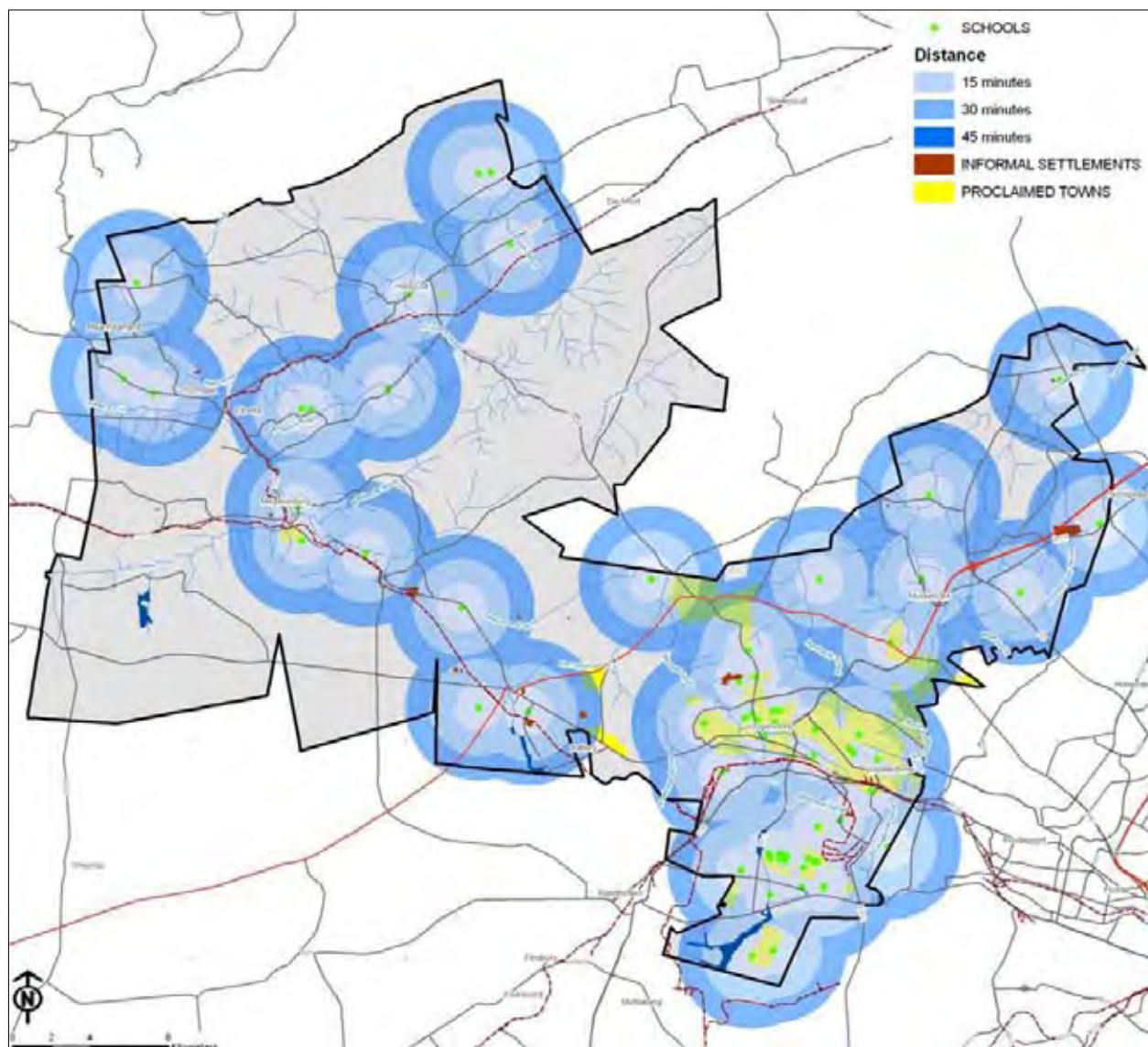
Schools are well distributed through the area. However, one should consider the fact that people are often not very mobile and that poor people often need to walk to wherever they want to be. Walking distances from schools is thus the main criteria for determining access and then also the possible demand for more facilities.

An assessment was made at 15 minute walking distance intervals to schools with the minimum 15 minutes and the maximum 45 minutes. The results are shown on the map above.

The outcome of the assessment is very positive. It shows that 94% of the population in Mogale City is within 30 minutes walking distance of a school. That translates into a maximum distance of 5km.

Table 11: Walking distance from schools

Minutes	15	30	45	Total
Total Population	196 907	59 834	18 038	274 779
% of population	71.7%	21.8%	6.6%	100.0%



Map 35: Walking time to schools

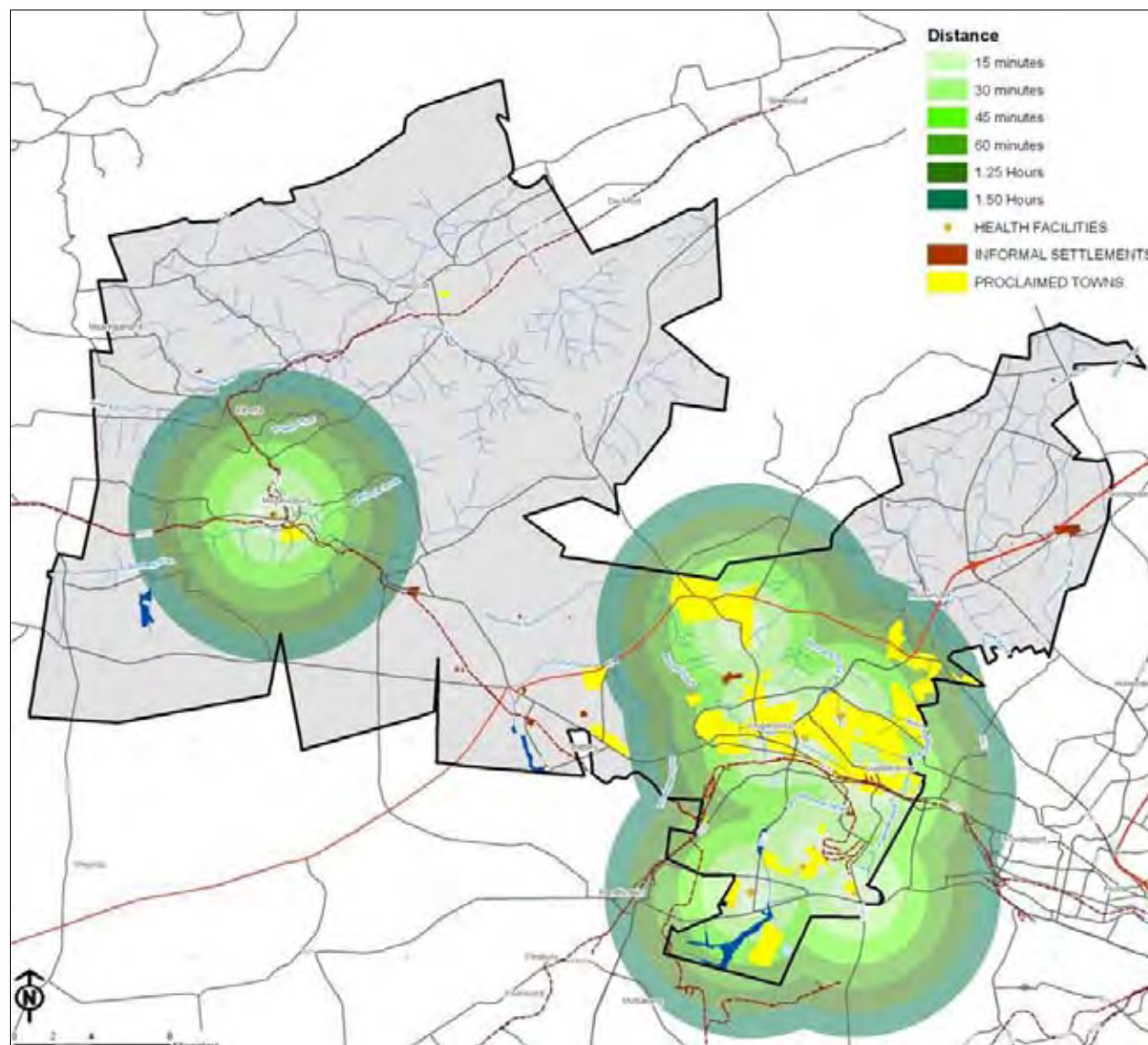
9.2 Access to health facilities

The assessment of health services is based on the same assumptions as for educational facilities. However, one can assume that clinics and other health facilities are not frequented on the same basis as education facilities and longer walking distances might therefore apply. Health facilities are available in all major settlements and towns. Map 36 and Table 12 shows the results of the assessment.

Table 12: Walking distance to health facilities

Minutes	15	30	45	60	75	90	Total
Total Population	88 554	109 966	34 158	7 111	3 783	3 799	247 371
% of population	35.8	44.5	13.8	2.9	1.5	1.5	100.0

More than 94% of the population is within 45 minutes from health facilities. For routine requirements this should be acceptable.

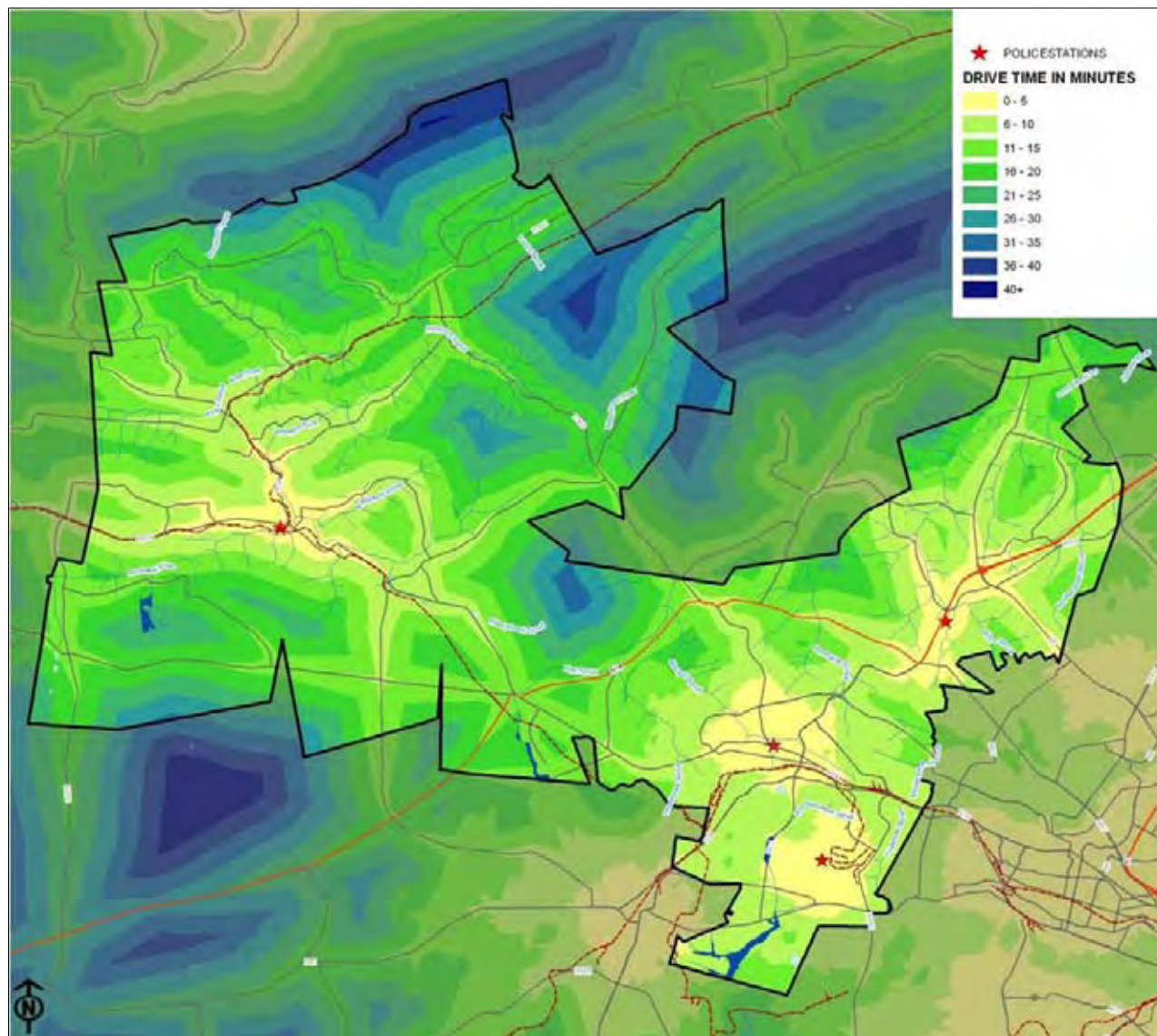


Map 36: Distance from health facilities

9.3 Access to police stations

The approach adopted with access to police stations is the opposite from the one used for education and health facilities. 5 minute interval isochrones from police stations were used to calculate the extent of access to these facilities.

The analysis in Table 13 shows that 90% of the population is within a 15 minute drive from a police station. The most inaccessible areas coincide with the areas with high conservation potential and thus also the most sparsely populated areas.



Map 37: Drive time from police stations