

Table 4: Resident Employment (formal and informal jobs), Mogale City, 2001-2010

INDUSTRY	2001	Share	2007	Share	2010	Share	2007-2010 Change	
							Total jobs	Jobs / Year
Agrifore	5,936	6.5%	3,853	3.4%	2,414	2.2%	(1,439)	(480)
Mining	2,254	2.5%	2,186	1.9%	1,253	1.1%	(933)	(311)
Manufacturing	14,506	15.8%	16,720	14.8%	15,050	13.4%	(1,670)	(557)
Utilities	321	0.4%	765	0.7%	955	0.9%	190	63
Construction	5,762	6.3%	7,880	7.0%	6,480	5.8%	(1,400)	(467)
Trade	15,691	17.1%	21,867	19.3%	22,284	19.9%	417	139
Catering & Accomodation	3,289	3.6%	3,359	3.0%	3,114	2.8%	(245)	(82)
Transport	2,709	3.0%	3,313	2.9%	3,689	3.3%	376	125
Communication	1,280	1.4%	1,433	1.3%	1,766	1.6%	333	111
FIRE	2,799	3.0%	3,301	2.9%	3,235	2.9%	(67)	(22)
Business Services	13,719	14.9%	19,722	17.4%	21,352	19.1%	1,630	543
Community Services	13,656	14.9%	16,259	14.3%	15,659	14.0%	(600)	(200)
General Government	9,920	10.8%	12,668	11.2%	14,680	13.1%	2,012	671
TOTALS	91,841	100.0%	113,328	100.0%	111,931	100.0%	(1,397)	(466)

Notes:

The statistics excludes private households

Agrifore is for Agriculture, hunting, forestry and fishing

Utilities is for electricity, gas and water supply

Retail is for wholesale and retail trade

FIRE & Services is for Financial, insurance, Real Estate

Transportation is for transport, storage and communication

Sources:

Statistics South Africa, Quantec Research and NRM Consulting

A total of 1,397 jobs were lost in Mogale City between 2007 and 2010. Job losses were severe in manufacturing (1,670), agriculture (1439), construction (1400) and mining (933).

4 ASSESSMENT OF KEY SERVICE DELIVERY ISSUES IN MOGALE CITY

The assessment of the status of service delivery and availability of necessary infrastructure is based on physical technical assessment on the ground, community views and data from Stats SA (2007 Community Survey).

4.1 Housing

Population explosion in Mogale City, compared to other areas within the West Rand District might be the cause for lagging behind in this service delivery area. Based on the rate of growth of the population and number of households in Mogale City between 2001 and 2007, the issue housing needs to be prioritized.

According to the community survey conducted by NRM in Mogale City Rural wards, the following was observed:

Table 2: Community survey on the status of housing in the rural wards of the MCLM

Ward	No House	Informal Structure	Formal Structure
23	71.4	18.7	9.9
27	55.4	28.6	16.1
29	85.0	0	15.0
30	58.0	42.0	
31	9.4	72.9	17.7
32	8.4	88.4	3.2
33	40.4	46.9	12.7

85% of surveyed residents in ward 29 indicated that they do not have houses of their own. This is due to the fact that they stay in hostels which do not belong to them. The housing situation also seems to be bad in ward 23, where 71% of the residents also do not have houses, followed by 58% in ward 30, 55% in ward 27, and 40% in ward 33. Most residents in ward 32 (88%) and ward 31 (73%) are accommodated in informal settlements, followed by ward 33 (47%), ward 30 (42%) and ward 27 (29%). Only a few residents have formal housing structures (less than 13%) in all.

In order to fast-track housing delivery, projects in the housing and construction sector need to be identified. The same projects will also provide communities in the areas with employment opportunities and construction skills. The possibility of linking up with the Expanded Public Works Programme (EPWP) in this regard could be considered.

4.2 Access to Roads and Public Transport

In principle it is the MCLM mandate to provide road infrastructure on which public transport can operate. With a sufficient public transport demand, taxis will start to operate if they can make a living out of the number of passengers. Statistics on the status of the roads in the rural wards of Mogale City was collected through the community surveys and the following was revealed:

Table 3: Community survey on the status of roads in the rural wards of the MCLM

Ward	No accessible	Gravel	Tarred road
23	6.7	88.9	4.4
27	21.4	71.4	7.1
29	18.0	45.0	37.0
30	18.0	81.0	1.0
31	35.4	56.3	8.3
32	12.8	85.1	2.1
33	21.6	75.1	3.3

According to the survey results, Ward 29 fares much better compared to other wards in terms of road infrastructure (37% of people have access to tarred roads and 45% gravel, with only 18% no access). Ward 31 has the highest percentage of residents with no access to roads (35%), followed by ward 33 (21.6%) and ward 29 and 30 (18% each). Ward 23 has the highest percentage of residents having access to gravel roads (89%), followed by ward 32 (85%), ward

30 (81%), ward 33 (75%) and ward 27 (71%). This is further confirmed by the rating each ward has given to infrastructure as follows:

Table 4: Rating of roads infrastructure in the rural wards of MCLM

Ward	23	27	29	30	31	32	33
Rating	2.3	1.9	2.8	2.0	1.6	1.4	1.5

The area of road infrastructure needs attention as it impacts on public transport, social and economic development of the area. Even though some people suggested rail and buses as other forms of transport that they would like to see in their areas, during ward leadership consultations, it became very clear that the most beneficial form of public transport is taxis.

4.3 Water and Sanitation

MCLM has a total length of rivers of \pm 1228 km traversing the entire municipality; the surface water bodies within the MCLM cover an area of \pm 280 hectares. Indications are that there is tremendous potential that is still untapped to utilize groundwater in this region by way of controlled bore holing.

MCLM has eight primary groundwater aquifers present and these aquifers represent substantial groundwater reserves and they are generally present throughout the year. In the more urbanised and industrial areas of MCLM, high levels of human influences i.e. mining, industrial and residential areas have exerted pressure on the quality of the surface and ground water due to pollution while the rural areas are generally under lesser pressure due to lower levels of human influences.

The water sources of the seven rural wards of MCLM were visited and sampling of rivers, dams and boreholes was done. Water supply and water quality are parameters that are considered to be key inputs to the crafting of a comprehensive rural development strategy for the rural wards of Mogale City Local Municipality. One of the most significant pollution risks in MCLM is the mining activities, especially wastewater discharge and solid waste disposal from slimes dams & derelict mine dumps which cause acid mine drainage. Acid mine drainage (AMD) pollution from abandoned mine lands is being recognized as one of the most serious causes of water pollution that now threatens the very communities that these mining activities were meant to serve. There are four types of abandoned mine lands:

- Sites that were previously surface mined;
- Sites that were previously underground mined;
- Sites that were both surface and underground mined; and
- Sites that had mine refuse/tailings deposited on the surface.

These sites are frequently left unreclaimed and unvegetated leading to pollution discharges of various chemical contaminants into water sources which cause environmental damage and threaten the health and safety of nearby communities long after the closure or decommissioning of the mines. AMD is often characterized by high concentrations of mineral acids, sulphates and ions of iron, chromium, nickel, aluminium, manganese, cobalt and heavy metals like mercury, lead etc. A major concern though has been the absence of a national view on the development of optimal and integrated solutions to the management of AMD.

It was also observed that in most rural wards septic tanks are used since bulk water borne sewage is not available. This is a high pollution risk to both ground and underground water resources in the area. Proliferation of informal settlements situated next to rivers in the rural wards result in increased surface water pollution. People from these settlements illegally dump all kinds of wastes close to and in streams and rivers causing severe pollution as seen below.



Pollution on the Magalies River

Agricultural activities including irrigation, use of fertilisers, pesticides and herbicides next to rivers result in increased pollution loads in the surface water. Piggeries and chicken batteries that are situated next to streams cause nutrient levels in water bodies to increase dramatically polluting the water and this ultimately results in eutrophic conditions.

Dolomitic instability causes sinkholes to develop in river systems which may cause channelling that transports surface pollution into ground water resources. Geological faults and dykes that cross river systems may divert surface water pollutants to ground water resources.



Although over 96% of the households in Mogale City had access to tapped water in 2007 compared to a 90.8% figure for 2001, majority of rural communities still have difficulties in accessing tapped water. They source their drinking water from mobile water bowser / tank trucks. This method of delivery of such an essential service is not reliable and cannot deliver quantities that can encourage and stimulate high impact developmental projects. Rand water boreholes are also far in between and they are mostly concentrated in areas that have higher economic activities and very few of these boreholes exist in the more remote areas.

From the community survey conducted by NRM Consulting, the following results were obtained regarding the current situation of water in Mogale City rural wards:

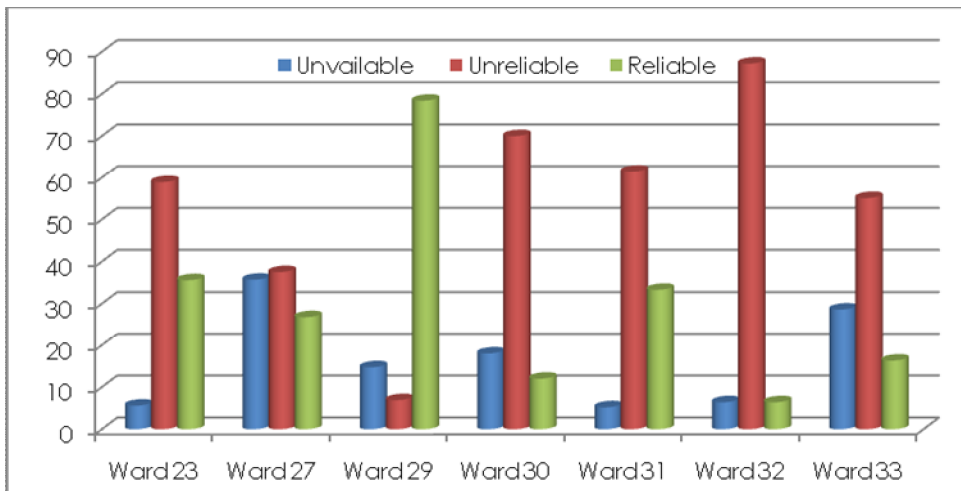


Figure 3: Access to water in the rural wards of Mogale City

In line with Stats SA data, most people in Mogale City rural wards do have access to water, even though in other situations water supply is unreliable and the percentage is lower than that of the Stats SA one (86% vs 96%). The ward that is affected most by unreliable water supply is Ward 32 (87%), followed by ward 30 (70%). Ward 29 is the only ward in which water is completely reliable for a large number of residents (78%).

6.3 Access to Energy

As at 2007 year end 81.8% of the Mogale households had access to electricity for cooking, 85.2% for lighting and 72.7% for heating and additional households that had access to energy overall increased by 670 between 2001 and 2007. Significant strides have been observed in service delivery relating to the supply of energy. All areas that were previously under Mogale City had electricity by 2007. The addition of the DMA has caused emergence of some houses that do not have electricity for any purpose.

Some rural households only use electricity for lighting, while cooking and heating with other sources of energy like paraffin and gas. Availability of other forms of energy, especially renewables could have positive impacts on the environment and a possibility for usage in some of the projects that will be proposed as part of the strategy.

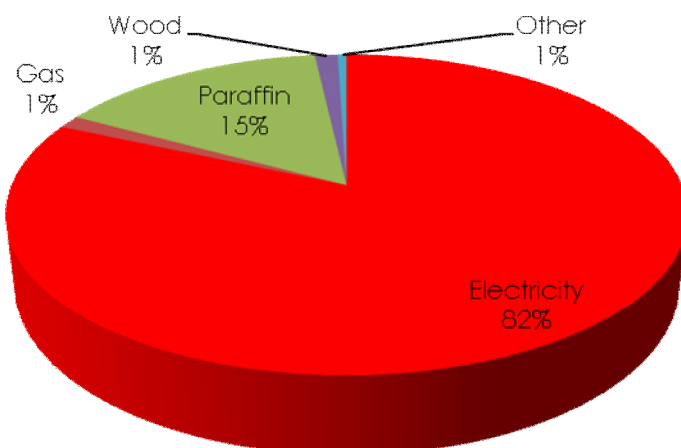


Figure 4: Households with access to energy for cooking in the MCLM between 2001 and 2007

The number of households that shifted from using wood, paraffin, gas and other forms of energy for electricity for cooking purposes increased significantly in Mogale City between 2001 and 2007. At least 85.2% of Mogale's households used electricity for lighting by end of 2007, up from a proportion of 74.2% in 2001.

In the rural set up, the situation on electricity differs sharply with the Stats SA figures, as there are certain rural settlements in which all households do not have access to electricity. This issue is also linked to private land ownership, where government cannot provide services. From the community surveys, in line with the Councillors' concerns that were raised in the status quo report, it would seem that electricity is the most challenge in Mogale City rural wards as observed in the table below:

Table 5: Community Survey: Access to electricity needs (%) in the rural wards of the MCLM

Ward	Not available	Unreliable	Reliable
23	85.7	8.8	5.5
27	83.9	7.1	8.9
29	45.1	10.8	44.1
30	97.0	3.0	
31	70.2	2.1	27.7
32	71.3	24.5	4.3
33	76.8	8.0	15.2

Ward 30 is the most challenged with respect to availability of electricity with 97% of the surveyed residents indicating that they do not have any access to electricity at all, followed by 86% in ward 23, 84% in ward 27, 77% in ward 33, 71% in ward 32 and 70% in ward 31. This presents a huge challenge for Mogale City.

The only ward that is doing very well in the area of electricity is once again ward 29 for the very same reasons that are mentioned above. The issue of lack of electricity is also linked to private land, wherein the municipality cannot provide this service where people are not staying in the municipal land, suggesting that the overarching challenge that needs to be addressed is land. In almost all wards, electricity has been cited as the first priority service delivery need.

During ward leadership consultations, it became very clear with all the wards that the issue of electricity is very much linked to the issue of housing and needs to come as a package. There are however, certain ward-specific suggestions that were made as per plans of action as follows:

- Eco-villages should implement alternative forms of energy as proposed by ward 23
- As an immediate measure, government must look into providing solar energy even before the proposed housing developments are implemented as proposed by ward 32 and ward 33

4.4 Access to Refuse Disposal Means

Households in Mogale City with no access to a rubbish, personal refuse dump and a communal refuse dump declined 59.7%, 26.2% and 3.6% respectively between 2001 and 2007. Access to removal of refuse by the local authority rose from 62,019 households in 2001 to 75,695 in 2007. This amounts to an average rate of additional 2,279 households being given access as far as the removal of refuse disposals is concerned.

The presence of personal refuse dumps, together with no access to refuse, if not controlled, may pose a threat to the environment. At the same time, this may provide opportunities for recycling projects that could be pursued as part of job creation and poverty alleviation initiatives. This is one of the areas that still require more attention from the municipality, including exploration of economic opportunities that might arise.

4.5 Access to Toilets and Sanitation

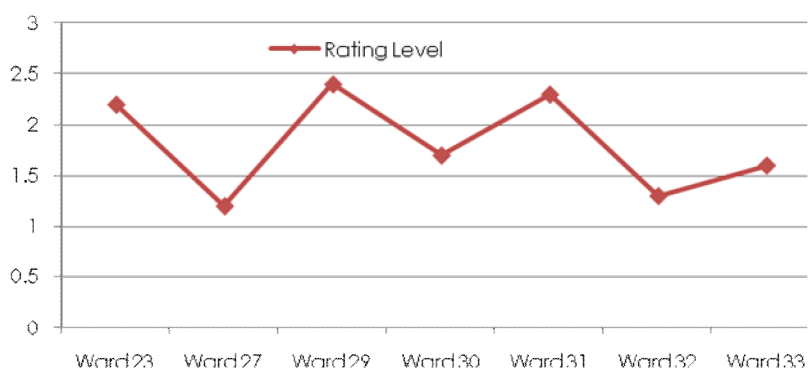
A significant number of households in Mogale City (about 83%) were using flush toilets by 2007. Between 2001 and 2007, there was a significant decrease (about 35%) of households with pit latrines without ventilation. At the same time, there were still bucket toilets being used in some of Mogale City areas during 2007. Sanitation is also one of the areas that need attention in Mogale City more so in view of the population explosion being experienced by the area.

The community survey that was conducted by NRM Consulting in Mogale City rural wards indicated the following:

Table 6: Community survey on access to toilets and sanitation in the rural wards of MCLM

Ward	Not available	Use pit latrines	In house / piped
23	7.7	85.7	6.6
27	60.7	35.7	3.6
29	59.8	2.0	38.2
30	26.0	69.0	5.0
31	5.2	75.0	19.8
32	13.8	81.9	4.3
33	40.3	51.9	7.9

Figure 5: Rating of current service delivery in terms of access to toilets and sanitations



A significant number of surveyed residents use pit latrines (ranging between 86% and 2% per ward), while another significant number (especially in ward 27 (61%) and ward 29 (60%) do not have access. This is

further confirmed by the rating of this service by the residents, where ward 27 rated the lowest (1.2), followed by ward 33 (1.6) and ward 30 (1.7). None of the wards rated this service above 3, meaning that there is general dissatisfaction with the service delivery in this area.

There is a huge concern around the hygiene of these toilet facilities, where some families are sharing. The situation also presents an opportunity where communities could be involved in erecting some of these facilities, thereby creating job opportunities for them. In all ward consultations, it was agreed that the issue of sanitation is linked to the issue of housing and land.

4.6 Access to Education and Literacy Levels

The community survey conducted by NRM in Mogale City rural wards has revealed the following concerning access to education in Mogale City rural wards:

Table 7: Community Survey on the access to Education and Literacy Levels in the rural wards of MCLM

Wards	Primary (no school)	Secondary (no school)	Tertiary (no school)
23	12.1	93.3	98.9
27	58.2	61.8	90.9
29	100.0	100.0	100.0
30	1.0	96.0	99.0
31	3.1	3.2	11.7
32	10.6	78.5	97.8
33	58.7	61.4	95.4

Ward 29 is hardest hit on all school levels; seemingly there is no primary, secondary or tertiary school in the area. Ward 27 and ward 33 also seem to be struggling at all levels of education. Ward 31 seems to be the best-resourced when it comes to education at all levels. In all wards, except ward 31, the majority of residents, indicated that there is no tertiary institution (100% in ward 29; 99% in ward 30; 99% in ward 23, 98% in ward 32, 91% in ward 27 and 95% in ward 33). This combined with the fact that some residents have indicated that skills development is one of the priority needs, suggests an immediate need for the establishment of a college and or a skills development institution in a central location that will be accessible to all wards. This is further confirmed by the rating given by Mogale City rural ward surveyed residents as follows, highlighting further the need for a central tertiary institution.

Table 7: Rating on the education facilities in the rural wards in the MCLM

Ward	Primary school	Secondary school	Tertiary
23	3.0	1.1	1.0
27	1.9	1.8	1.2
29	1.0	1.0	1.0
30	3.9	1.0	1.0
31	3.8	3.8	3.3
32	2.4	1.2	1.0
33	2.1	2.0	1.0

Ward 32 received the best ratings, when compared with all other wards, while ward 29 received the least ratings at all levels. Except for ward 31, tertiary education received the lowest ratings. Concerning the educational levels of residents in Mogale City Rural residents, the following was observed:

Table 8: Education profile of the respondents in the rural wards in the MCLM

Ward	23	27	29	30	31	32	33
Sample Size	67	45	88	100	90	98	229
None (%)	11.9	6.7	0.0	0.0	0.0	3.1	6.1
Grade 1 to 5 (%)	11.9	35.6	21.6	10.0	10.0	17.3	15.7
Grade 6 to 8 (%)	9.0	17.8	20.5	25.0	18.9	24.5	19.2
Grade 9 to 12 (%)	59.7	40.0	58.0	64.0	70.0	53.1	59.0
Tertiary (%)	7.5	0.0	0.0	1.0	1.0	2.0	0.0

In line with Stats SA observation, most Mogale City rural ward residents possess Grade 9 to 12, while very few have tertiary qualifications (7.5% in ward 23, 2% in ward 32 and 1% each in ward 30 and 31). This further enhances the argument about the establishment of a tertiary institution in the area. The issue of an ABET centre is also needed especially to cater for Ward 23, 27, 33 and 32.

4.7 Access to Public and Recreational Facilities

Provision of recreational facilities is one of the competencies of local municipalities. Most rural wards in Mogale City do not have access to public and recreational facilities, and this is linked to the land and housing problem. In terms of ratings, there was no specific question relating to recreational facilities.

In terms of priority, a very insignificant percentage of surveyed residents from all wards have indicated public facilities as their priority for development. During ward leadership consultations, it was confirmed in all wards that there is a great need for recreational facilities e.g. sporting complexes, parks. Some ward-specific suggestions were as follows:

- o No new sporting complex needs to be built-the existing one needs to be upgraded as suggested by ward 31.
- o Separation of the arts and culture centre from the library as suggested by ward 31.
- o Establishment of a multi-purpose centre with sports facilities. This centre should be next to the road to facilitate easy travel with public transport as proposed by ward 33.

4.8 Access to Health Facilities

Mogale City is home to 9 public clinics; 3 provincial hospitals and 2 private institutions. The community survey revealed the following concerning the health situation of Mogale City rural wards in terms of rating:

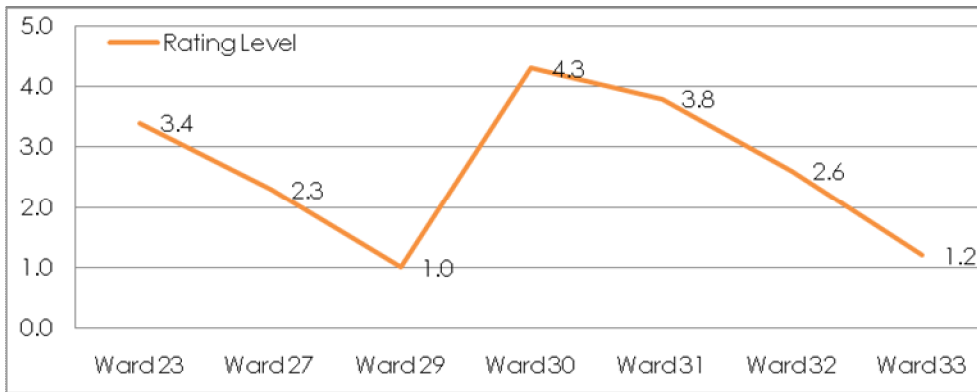


Figure 6: Rating of health facilities in the rural wards of MCLM

Ward 29 seems to be the hardest hit concerning availability of health facilities, with 100% of the surveyed residents indicating no health facility in the area, followed by ward 33 (87%), and ward 32 (21%). Other wards do have health facilities, even though they are inadequately resourced (e.g. in ward 32, 65% indicated that these facilities are not well-resourced). Ward 30 and 31 seem to be doing fairly well in terms of availability of the facilities with only 1% each of residents with no access to a health facility.

Ward 30 received the highest rating (4.3), followed by ward 31 (3.8) and ward 23 (3.4). Health is the current rated service delivery area in Mogale City rural wards. The two wards that are lagging behind are ward 29 and 33 for reasons mostly related to private land, where public amenities cannot be supplied.

During ward leadership consultations, all findings of the survey were validated as being a true reflection and a few ward-specific comments were made including: Establishment of a 24-hour health facility in ward 32, which will also have a maternity ward.

4.9 Safety & Security Issue

According to the SAPS report, Muldersdrift has been having the highest crime rate between 2007 and 2010 when compared with other locations in Mogale City. This area borders parts of ward 23 and ward 33. The community survey revealed the following on the crime levels;

Table 9: Assessment of levels of crime (%) in the rural wards of the MCLM

Ward	High	Moderate	Low
23	32.2	45.6	22.2
27	37.7	26.4	35.9
29	56.9	15.7	27.5
30	35.0	51.0	14.0
31	25.8	32.3	41.9
32	11.7	73.4	14.9
33	55.6	22.7	21.8

57% of surveyed residents from ward 29 indicated that high crime is a challenge, followed by 56% in ward 33, 38% in ward 27, 35% in ward 30, 32% in ward 23 and 26% in ward 31. The ward

that seems to have the lowest crime rate is ward 31. Furthermore, the ratings of current crime status from the wards were as follows:

Table 10: Ratings of crime levels in the rural wards of the MCLM

Ward	23	27	29	30	31	32	33
Rating	2.2	2.4	1.8	3.1	3.3	2.7	2.1

From some interviews with residents it would seem that the presence of police stations together with Community Police Forums (CPF's) is one of the effective ways of curbing crime. It is of utmost importance to have police stations in all the wards that do not have police stations or at least satellite police stations.

5 FRAMEWORK AND THE STRATEGY

Based on the analysis of the key demographics, economic overview, key stakeholder consultations and service delivery assessment, the Comprehensive Rural Development Strategy was crafted. The Strategy outlines key strategic objectives and action plans paramount in growing and developing sustainable rural communities.

5.1 Land acquisition

One of the major challenges currently hindering development in all Mogale City Rural wards, as cited by almost all key stakeholders that were interviewed, including the community is the availability of land. This challenge is being driven by all types of variables including private ownership of land (non-availability of land), inflated prices when the municipality wants to buy from private owners among others. The non-availability of land is negatively impacting on the provision of other services such as housing, electricity, water and sewage. Land availability is also linked to economic activities. The municipality cannot provide fully-fledged services where communities residing on privately owned land portions.

According to the Hekpoort Precinct Plan 2020, the Mogale City Local Municipality owns a relatively small land parcel, consisting of 3 portions, situated on the intersection of the R560 and the R401. The northern part of this land parcel was purchased for the development of a rural village to house informal households within Hekpoort. The southern part of this land parcel is intended to be used for community-based commercial farming.

Based on our consultations, the Department of Rural Development and Land Reform has not traced any approved or active land claims within the municipality except for a few that were dismissed due to various reasons. Some of the private sector players that were interviewed are keen to partner with the Municipality in finding a solution to the provision of land for long term employee owned housing for their communities. Linked to the issue of land availability are evictions most prevalent in ward 23.

Opportunity or challenges

- Some of the private sector players are keen to work with the Municipality in finding a solution to the land availability issue.