

1 INTRODUCTION

1.1 Background

In the last ten years, Mogale City Local Municipality (MCLM) has experienced phenomenon growth in households and population size when compared to other West Rand District municipalities (See the table on the key demographics section). This growth has both positive (Such as the availability of skilled manpower) and negative implications to the municipality. An increase in population and household size exerts pressure on the provision of bulk infrastructure, service delivery and the availability of the already scarce job opportunities in the area.

The economic base of Mogale City closely resembles that of Gauteng in general with manufacturing and trade both playing a significant role both in terms of creation of wealth (GDP contribution) and generating jobs (See the table on the economic overview). With its abundant natural resources and agricultural base, Mogale City has potentials of growing its manufacturing sector in food and agro processing and other opportunities.

If well-structured and implemented, the development of the manufacturing and other sectors in Mogale City has the potential of creating job and business opportunities for the rural population. It is against this background of the urgent need to create job and business opportunities, alleviate poverty and to improve service delivery in the rural wards of MCLM that the study to develop a comprehensive rural development strategy and implementation plan was commissioned and herewith implemented.

1.2 Building on the provincial and national vision

The current South African (SA) National Government is focusing on the following five priority areas (Including rural development) as part of its commitment to improve service delivery and alleviate poverty in the country.

- a) Education
- b) Housing
- c) Rural development
- d) Job creation
- e) Safety and security

In response to the set national priorities, specialised rural development units were established at all three levels of Government (national, provincial and local). Numerous programs were and are being developed to spearhead rural development and improve service delivery. This includes the development of a Comprehensive Rural Development Programme (CRDP) in 2009 by the Ministry of Rural Development and subsequently the establishment of the Council of Stakeholders in 2010 at both national and local level. The Council advises the Minister of Rural Development and the local leadership on rural development issues.

The need for a comprehensive rural development strategy and an implementation plan for MCLM follow a recent provincial rural development strategy developed by the Gauteng Department of Agriculture and Rural Development (GDARD). The nature of settlements in MCLM is sporadic outside Krugersdorp (main urban area) and the rural economy is mainly driven by agriculture and tourism.

1.3 Focus Areas and Objectives of this Study

The comprehensive rural development strategy and implementation plan (CRDS) focuses on action and not very nice to have ideas. The success of the CRDS will be determined by the level of implementation of the same among other success factors. In as much as it is acknowledges that it is going to be very challenging to implement all the identified activities, it is worthwhile to note that the CRDS will attempt to build Mogale City as a place to work and reside.

The following seven wards in Mogale City were identified as rural and used as study areas.

Table 1: List of the Mogale City rural wards

Ward number	Main town (s)
23	Rietfontein, Driefontein & Van Wyks Restant
27	Oaktree and Game Reserve
29	Honingklip and Steinsvlei
30	Tarlton
31	Magaliesburg
32	Hekpoort and Kromdraai (DMA)
33	Rhenosterspruit, Lindley & Nooitgedacht

The entire Map for MCLM is shown below.

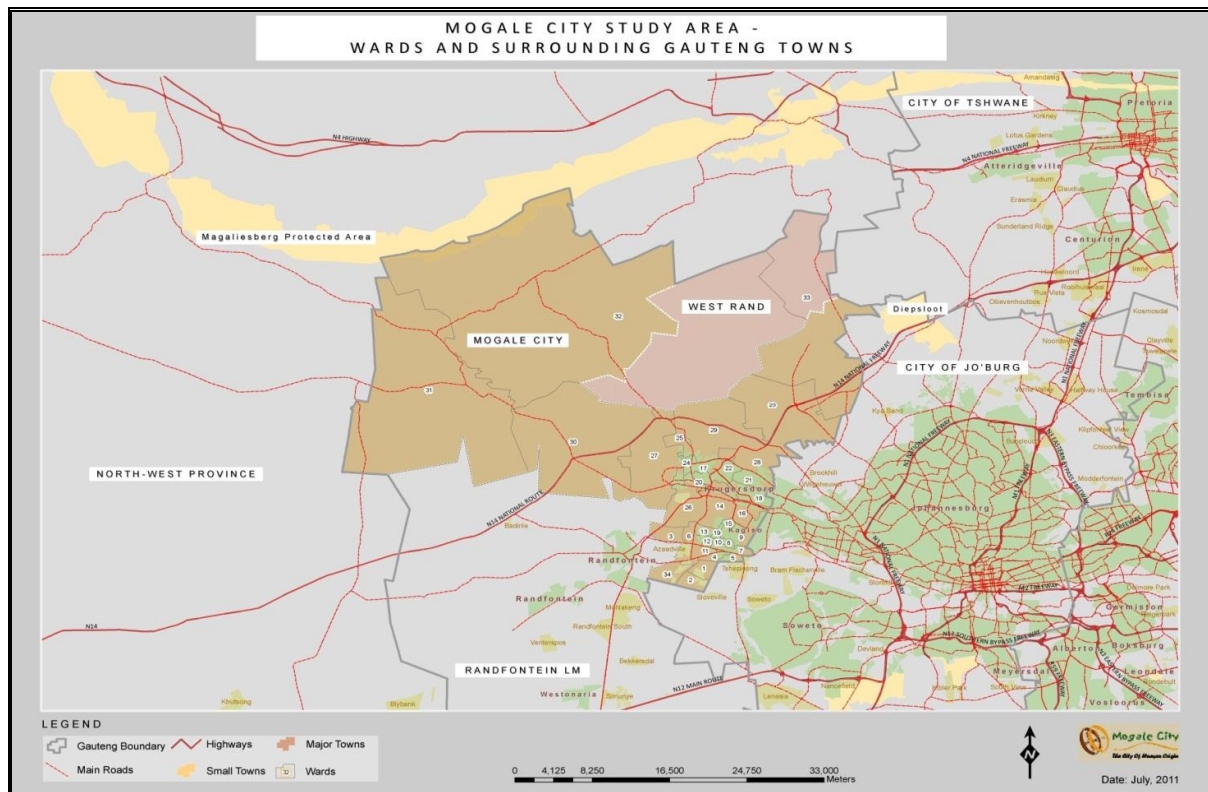


Figure 1: Mogale City Map

1.4 Observed key challenges

Some of the key challenges that were confirmed by the CRDS study include the following;

- A serious disintegration within the Mogale City community along racial lines and political affiliation. The need for a shared common vision on rural development and to pull in the same direction on poverty alleviation initiatives / programs.
- The inability to acquire adequate land to advance economic and empowerment programmes as well as human settlements.
- A shortage of skilled and educated youth to drive rural development programs.
- Huge backlog on the provision of bulk infrastructure, public, sporting and recreational facilities in most rural wards of Mogale City.
- Reluctance or inability to pay for basic services rendered impacting negatively on the Municipality's revenue base.

1.5 Strategic Vision

The rural strategic vision of MCLM is influenced by core governance systems as captured in the 2011–2014 strategy documents of the municipality. It strives for *improved quality of life for all communities of Mogale City*. This can be made possible if rural wards of Mogale City are turned around and made vibrant and sustainable communities where people lives in harmony with each other contributing to the growth of the local economy.

The following principles are key anchors to this CRDS strategy:

- The MCLM's role is to create a conducive environment for rural development and to work with rural communities to support locally developed initiatives, programs, plans and projects.
- All rural communities should have access to a minimum level of basic services.
- Each member of the community should show good stewardship where land, water and other resources are responsibly consumed.
- Action must be initiated and developed at rural wards to build strong and sustainable enterprises managed by locals. The need for communal ownership of projects.
- Key focus must be on educating and building the skills base of the communities so that they can effectively participate in the economy.
- Sustainable cooperatives and mentorship models should be implemented in order to drive economic empowerment programmes and bulk infrastructure issues.

2 APPROACH AND CONSULTATION PROCESS

The build-up process of developing the CRDS for MCLM commenced with a review of the current status quo of the municipality in areas such as its key demographics, key strategic documents, access to basic services and bio-physical data. The synthesis of the literature was made possible with the aid of economic and social data from Quantec Research and the Statistics South Africa (Stats SA).

The secondary data was complemented by community surveys that specifically targeted rural wards. Community Liaison Officers (CLOs) were appointed from each rural ward and administered the surveys. Key stakeholders from government and public entities, and the private sector were also consulted.