

## 2. STUDY AREA

**Figure 2** reflects the study area for Tarlton. It is important to note that for the purposes of this study it was decided to rather use a soft boundary approach than to be very rigid in terms of the exact extent of the study area. The reason for this is the fact that part of the scope of this study would be to give strategic direction and assess the influence the development will have on the surrounding area and visa versa. It is therefore important to take a broader perspective and not only focus on a very tight boundary linked to the existing urban activities within the settlement.

The Tarlton Project is an integrated project initiated by the Mogale City's Rural Development. The Tarlton development area is represented broadly by the different rural land uses including residential typologies and agricultural development. There are isolated other uses such as race tracks.

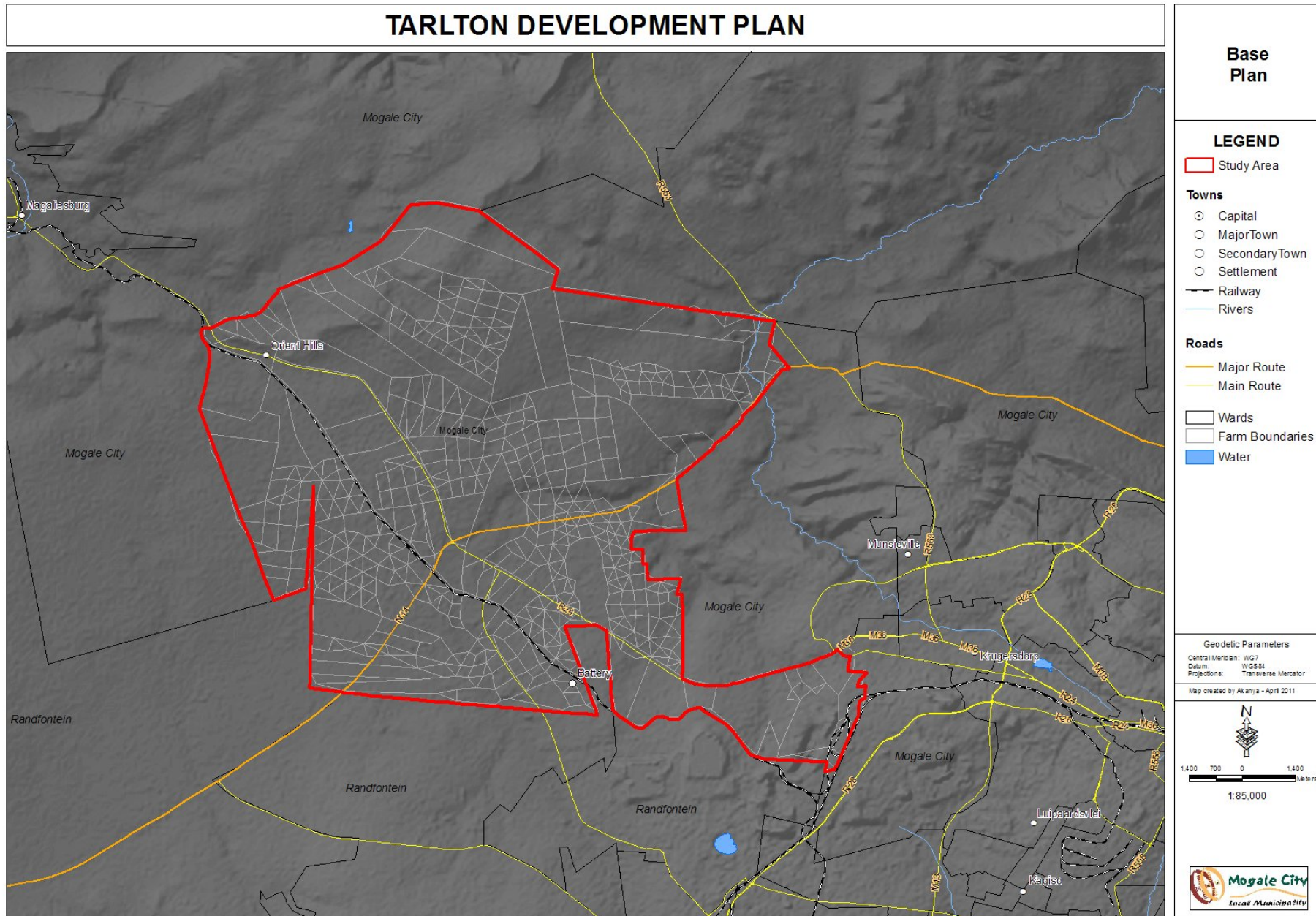


Figure 2: Study Area