



Ref: Maropeng Mokhatla (SCM)

Tel: (011) 951-2541/2014/16

**REQUEST FOR FORMAL WRITTEN PRICE QUOTATIONS**

**Procurement from R30 000.00 up to a transaction value of R 200 000.00 (including Vat)**

**(For publication on Mogale City Website and Notice Boards)**

Kindly furnish Mogale City Local Municipality with a written quotation on the services listed hereunder:

**RFQ: I (R) 10/2013**

**QUOTATIONS ARE HEREBY INVITED FROM SERVICE PROVIDERS FOR MINOR ROADS REHABILITATION WORKS ON AN AS AND WHEN REQUIRED BASIS FOR PERIOD OF SIX (6) MONTHS.**

**Advertising date: Tuesday 11 September 2012**

**Closing date and time: Wednesday 19 September 2012 @ 11:00**

**Compulsory briefing session will be held on Friday 14 September 2012 @10:00 at the Flip Uys Boardroom, Civic Centre, Krugersdorp.**

The quotation must be submitted on the official quotation document (including all the required annexures) and must be delivered by hand before the official closing date and time to:

The SCM Unit of MCLM

Civic Centre

Corner Market & Commissioner Streets, Krugersdorp

Upper Level West Wing

Tender Box 1

---

**The following conditions will apply:**

- Quotation documents can be downloaded from the website [www.mogalecity.gov.za](http://www.mogalecity.gov.za) or collected from the Supply Chain Management Unit, Finance Dept, Civic Centre, Krugersdorp.
  - The lowest or any quotations will not necessarily be accepted and MCLM reserves the right to accept the quotation in total or only in part.
  - To participate in MCLM's quotation procurement of goods and services, suppliers are requested to register on the MCLM supplier database. Forms available from SCM Unit or website.
  - No late quotations delivered after the official closing date and time will be accepted.
  - **Price(s) quoted must be valid for at least sixty (60) days from date of your offer.**
  - **Price(s) quoted must be firm and must be inclusive of VAT.**
  - A firm delivery period must be indicated.
  - A valid, original tax clearance certificate must be attached.
  - **All quotations received will be evaluated on the 80/20 point scoring basis. The 80 points will be for Price and 20 points are for Broad Based Black Economic Empowerment (BBBEE) for attaining the BBBEE status level of contribution in accordance with the table below:**
    - **MBD 4. Declaration of Interest**
    - **MBD 6.1 B-BBEE Status Level of Contribution.**
    - **MBD 8: Declaration of bidders past supply chain management practices**
    - **MBD 9: Certificate of independent bid determination.**
- If the MBD forms are not completed & submitted, your quotation will be rejected.
- No quotation will be considered from persons in service of the state (MDB 4)

**MOGALE CITY LOCAL MUNICIPALITY  
REQUEST FOR FORMAL WRITTEN PRICE QUOTATION**

- **As from the 7 December 2011, all Service providers / contractors must submit valid, certified copies of their BEE certificates from an accredited BEE verification agency with their tender submission.** Failure to submit a BEE certificate will lead to forfeiture (loss) of the preference points.
- In the instance of Exempted Micro Enterprises (EME) (turnover less than R 5m) a letter from a professional, registered accountant/ auditor in order to qualify for preference points.
- **Electronic (e-mailed or faxed) quotations are not accepted.**

Failure to submit a BEE certificate will lead to forfeiture (loss) of the preference points  
In the instance of Exempted Micro Enterprises (EME) (turnover less than R 5m) a letter from a professional, registered accountant/ auditor in order to qualify for preference points.

Mogale City Local Municipality requests a quotation on the services listed hereunder on the Request for Quotation Forms. Please furnish all the information as requested and return the quotation on the date stipulated. Late and incomplete submissions will invalidate the quotation submitted.

<b>RFQ NUMBER:</b>	<b>I (R) 10/2013:</b> Appointment of service provider for minor roads rehabilitation works on an as and when required basis for a period of six (6) months.
<b>ADVERTISING DATE:</b>	Tuesday 11 September 2012
<b>DEPARTMENT</b>	Infrastructure Services: <b>Roads &amp; Surface Drainage</b>
<b>DESCRIPTION OF SERVICES</b>	<p style="text-align: center;"><b><u>PROJECT SPECIFICATION</u></b></p> <p>1.     <b>Scope:</b> This specification covers the rehabilitation of roads in Mogale City and includes minor patching, edge break repairs and the application of a hand mixed Slurry on identified roads.  The work will be carried out by using manual labour for patching work, edge break repairs and to mix and apply Slurry surfacing <b>on site</b> in order to achieve the required texture finishing.</p>

The work to be done will be identified and monitored by the Section- Roads and Surface Drainage representative and will include the following:

- Approximately 250m<sup>2</sup> minor pothole/ patching repairs
  - Cleaning of the road surface.
  - Accommodation of traffic.
  - Apply 6-8 mm thick Slurry Surfacing only, over approximately 4500m<sup>2</sup> (0.75Km residential roads).
- or:
- Supply and apply 6-10 mm thick Slurry Surfacing over approximately 4500m<sup>2</sup> (0.75Km residential roads).

***The actual amount of work to be performed will be dependent on the available budget, identified needs and priorities of Mogale City Local Municipality.***

**2. Interpretation:**

2.1 Supporting Specifications: The following specifications shall, inter alia, form part of the contract document:

- a.) This project specifications.
- b) SARTSM Manual Vol 2.
- c) Drawing no's:  
(Annexure: "B")
- d) SABS specification for Slurry surfacing.

**3. Schedules:**

**Minor Roads Rehabilitation Works.**

ITEM	NORMAL SLURRY SURFACING: 6-8mm THICKNESS APPLIED BY HAND (AS PER ANNEXURE: "C")	Rate/m <sup>2</sup> (inclusive material) (VAT INCLUSIVE)
1.1	Cleaning of the road surface; Accommodation of traffic ; Apply 6-8 mm thick hand mixed Slurry Surfacing; Dispose of waste material at designated dumping site or borrow pit.	
1.2	Cleaning of the road surface; Accommodation of traffic; Apply 6-8 mm thick hand mixed Slurry Surfacing; Dispose of waste material at designated dumping site or borrow pit.	Rate/m <sup>2</sup> (Exclusive Material supplied by Mogale City Local Municipality) VAT INCLUSIVE

**Min Daily Production Rate to be achieved = 150m<sup>2</sup>**

ITEM	PATCHING/ POTHOLE REPAIRS (AS PER ANNEXURE "C")	Rate/m <sup>2</sup> (inclusive material) VAT INCLUSIVE
2.1	<b>D<sub>1</sub> +D<sub>2</sub>&lt;8mm</b> <ul style="list-style-type: none"> <li>Apply 6-8 mm thick hand mixed Slurry Surfacing.</li> </ul>	
2.2	<b>D<sub>1</sub> &lt;50mm</b> <ul style="list-style-type: none"> <li>.... <b>Fill base layer with imported G5 approved material.</b></li> <li>Compact the material with a hand stamper or wacker, depending on the site, position of pothole and existing road layers.</li> <li>Apply 6-8 mm thick hand mixed Slurry Surfacing.</li> </ul>	
2.3	<b>D<sub>1</sub> &gt;50mm</b> <ul style="list-style-type: none"> <li>Fill base layer with imported G1 Crusher run approved material unless otherwise instructed by the Engineer.</li> <li>Compact the material with a hand stamper or wacker, depending on the site, position of pothole and existing road layers</li> <li>Apply 6-8 mm thick hand mixed Slurry Surfacing (D<sub>2</sub>).</li> </ul>	
2.4	<b>D<sub>1</sub> &gt;50mm</b> <ul style="list-style-type: none"> <li>Fill base layer with imported G1 Crusher run approved material unless otherwise instructed by the Engineer</li> <li>Compact the material with a hand stamper or wacker, depending on the site, position of pothole and existing road layers.</li> <li>Apply SS60 as tack coat and to seal edges.</li> <li>Use Coldpatch material to fill D<sub>2</sub></li> </ul>	

**4. Special Provisions:**

PS.44: (General conditions of contract 2004)

PS44.1 Measurement of the works

PS44.1.1 Quantities are not included in the bill of Quantities, as the present amount is based on work on an as and when required basis. CPA specifications and special materials not applicable.

General

- ❖ The contractor must at all times exercise care while undertaking the work to ensure that trees, shrubs, hedges, flowers, etc on the pavements or private properties adjoining the work areas are not unnecessarily removed or negatively affected by the work. Should any damages occur as a result of negligence on the part of the contractor, he/she shall be responsible for costs in this regard.
- ❖ The contractor must, at the commencement of the contract, submit the outline of his intended work schedule, for the approval by the Engineer.

**ANNEXURE A**

**Traffic accommodation for road reserve and on shoulders.**






A 1

### 13.8.8

### SHORT TERM WORKS

#### 13.8.6 Fixed Site - Work on Shoulder

- 1 The temporary signing treatment illustrated in Figure 13.35 is intended for short term work located on the shoulder of a public road, either in the sense that the work is actually on the shoulder, or is immediately adjacent but outside the shoulder, but requires occupation of the shoulder by the work unit. In situations such as this, if the work unit's support vehicle is equipped with flashing yellow warning lights, it may benefit the safety of the workers for the vehicle to be parked on the shoulder, at the end of the Buffer Zone, between the workers and approaching traffic.
- 2 If the work is carried over into darkness, the TRAFFIC CONE delineation devices TD4 shall be provided with retroreflective sleeves or they shall be replaced by DELINEATOR PLATE hazard marker signs TW401/TW402. Cones used on high speed roads shall have a height of at least 700 mm. For details of delineator and cone spacings refers to table 13.4.
- 3 Tapers used for this type of work site treatment should be in accordance with Table 13.5.
- 4 Advance warning signs should be located up to 600 m in advance of the start of the taper for sites with operating speeds in excess of 80 km/h. In addition, because the signing levels are minimised, extreme care must be taken to note any features of each specific work site which may reduce the effectiveness of the signs. In particular, vertical curvature and overhanging vegetation should be assessed. If there are adverse conditions and operating speeds are in excess of 80 km/h, or even 60 km/h signs, should be displayed in accordance with Figure 13.26. The requirements of Table 13.1 should be adhered to with regard to the minimum mounting height of temporary signs.

MAINTENANCE UNIT INVENTORY			
Sign	No	Size (mm)	Quantity <sup>a</sup>
	TW336	1200	2
	TW330	1200	1
	TR104	1200	1
	TD4	450 750	15 Min. plus 10 per 100m site length
	TR201-80 TR201-60	1200	2 2

#### Checklist

- ☐ are operating speeds in excess of 80 km/h?
- ☐ does the unit have enough cones/delineators for correct spacings?
- ☐ does the unit have delineators or retroreflective sleeves for cones for night time use?
- ☐ is the site set up with adequately safe Buffer Zones (see Figure 13.20)?
- ☐ is there adverse vertical or horizontal curvature on the approach to the site?
- ☐ can signs be mounted higher to improve early warning of the site if required?

# ANNEXURE A

A 2

## Traffic accommodation for road reserve and on shoulders.

### SHORT TERM WORKS

13.8.9

Ref. See Subsection 13.8.6  
for Sign Sizes.

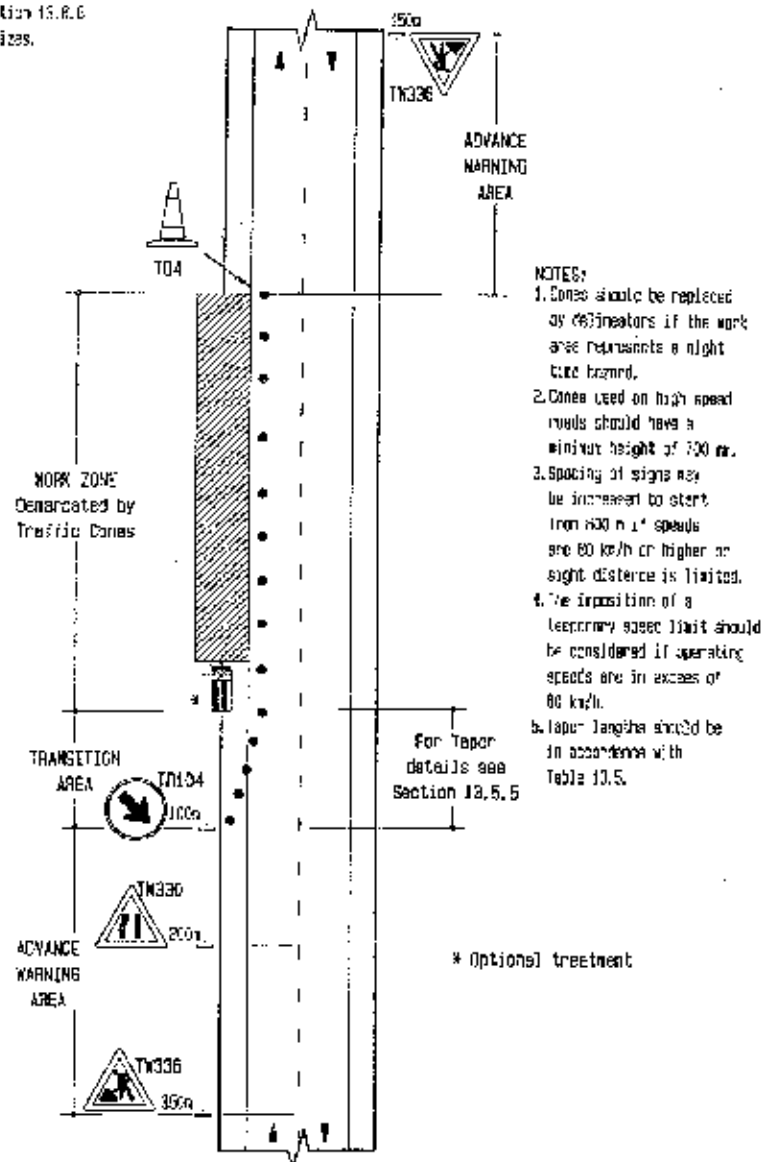


Fig. 13.35 Fixed Site - Work on Shoulder

NOVEMBER 1997

SARTSM - VOL 2

ROADWORKS

## ANNEXURE A

## Traffic accommodation for road reserve and on shoulders.

## SHORT TERM WORKS

## 13.8.2

## 13.8.3 Maintenance in Road Reserve

1. This application represents the lowest signing level covered in this Chapter. This signing level is appropriate ONLY when the work concerned does not encroach nearer to the edge of the roadway than the shoulder break point. Typical activities which might warrant this low level of signing are:

- (a) verge grass-cutting;
- (b) cleaning of side drains or cross drain inlets and outlets;
- (c) fence repairs;
- (d) electric post repair/maintenance/replacement.

2. As soon as workers are required to move closer to the travelled way, additional signing consistent with Figures 13.35, 13.36 or 13.41 to 13.43 should be used.
3. If the maintenance work gradually progresses along the road reserve, the TW336 signs should be moved forward with the work so that they are never more than 600 m from the work.
4. All workers should still be provided with the recommended bright clothing, even when working off the road edge (see Figure 13.30).
5. The sign inventory indicated is a maximum for the type of work concerned. Any work unit undertaking this type of work is likely to be a general maintenance unit and will probably have a minimum sign inventory consistent with most tasks in this section.

MAINTENANCE UNIT INVENTORY			
Sign	No	Size (mm)	Quantity
	TW336	1200	2
	TIN 11.3	1200	4
	FLA35	450 X 600	2

## Checklist

- ☐ Is the site set up with adequately safe buffer zones (see Figure 13.20)?
- ☐ Are workers likely to get within 3 m of passing vehicles?
- ☐ Is the maintenance unit vehicle and equipment well off the road?
- ☐ Can signs be clearly seen by approaching drivers - if not move them further out?
- ☐ Is a higher level of signing appropriate to ensure worker and public safety?

**ANNEXURE A**  
**Traffic accommodation for road reserve and on shoulder**

**SHORT TERM WORKS**

**13.8.3**

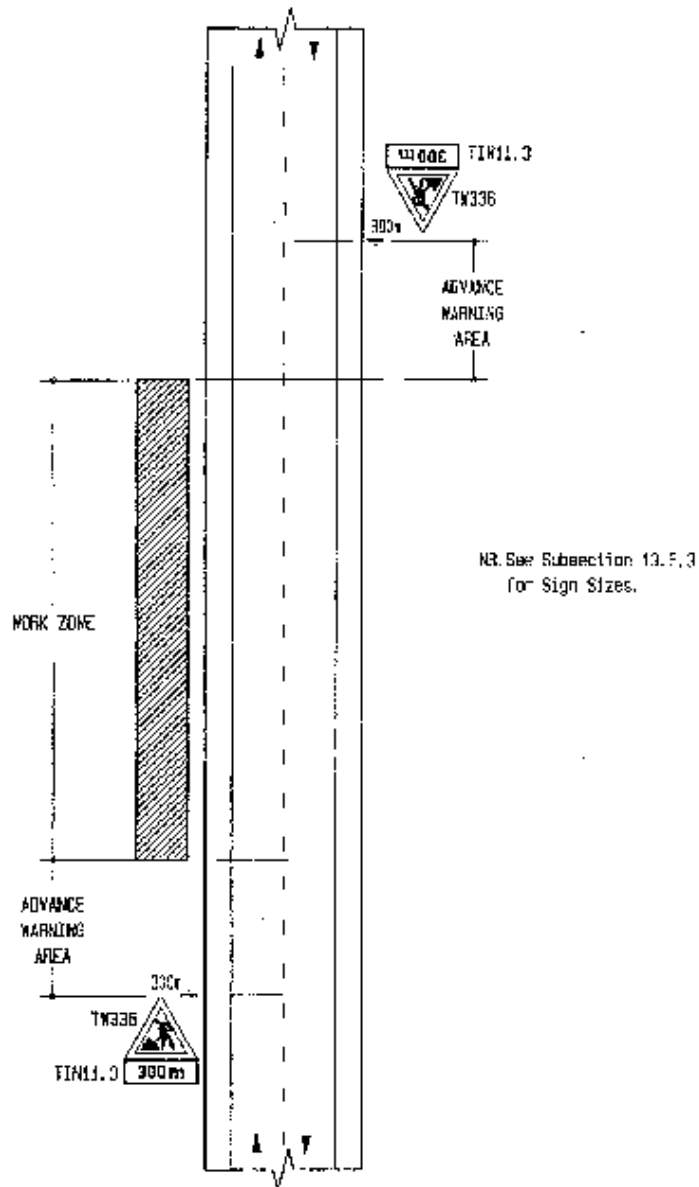


Fig. 13.32 Maintenance in Road Reserve (off the road)

NOVEMBER 1997

SARTSM - VOL 2

ROADWORKS

## ANNEXURE B

### Particular Project Specifications for Mixing and applying Fine Slurry Surfacing by hand

#### 1....TOOLS AND EQUIPMENT

Before commencement of the work, ensure that the following tools and equipment is available on site:

2x brooms, 2x shovels, Hessian bags, 2 x squeegees, SS60 Stablemix Anionic Bitumen Emulsion (sourced from approved supplier), at least one 200 Liter drum for mixing, two wheelbarrows, Crusher dust/sand (sourced from approved supplier and pre- approved by the Engineer), 1x 25 Liter bucket, 1 x 20 Liter bucket, 1 x 5 Liter bucket, bags of cement (SABS approved product and pre- approved by Engineer).

#### 2....UNIFORM AND CLOTHING REQUIREMENTS

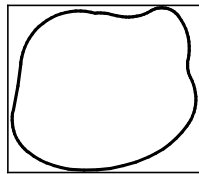
Gumboots and overalls should be worn when performing the work.

#### 3....METHOD

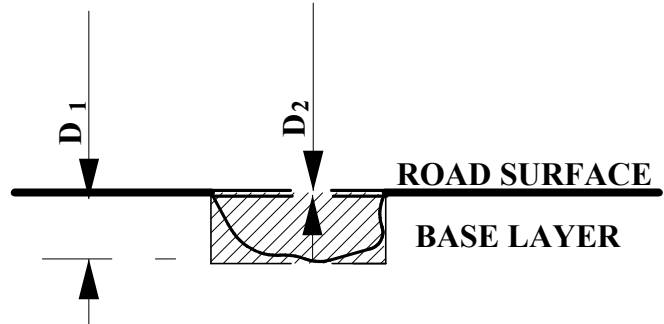
1. ....Implement safety and traffic accommodation measures as per section Annexure "A".
2. ....Work area to be swept clean and all loose debris to be removed.
  - ....Slurry to be mixed thoroughly in batches, with the required amounts of material to be added to the mix as follows:
  - ....Crusher dust / sand = 2 wheelbarrows
  - ....20 Liter water
  - ....30 Liter SS60 Anionic Stablemix Emulsion (undiluted)
  - ....0.5 Liter cement (measured in a 5 Liter bucket)
3. ....The Slurry mix is then applied in thin layers with squeegees (approximately 6 – 8mm thickness onto the road surface. An area of 120m<sup>2</sup> (40m x 3m wide) can be covered with 1m<sup>3</sup> of Slurry. Should it be required to resurface more than one lane, it is advisable to leave one lane open in order to allow for through traffic.  
The Surfaced area is then smoothed and loose stones are removed by dragging the Hessian bags over the area.  
The surfaced areas should be closed off to traffic for at least 2 hours during a warm Summer's day or at least 4 hours, during Winter to allow for the product to dry.
4. ....The Surfaced area is then opened up for traffic, once the product has dried completely.

## ANNEXURE C

### Particular Project Specifications for reinstatement of: Small potholes and Edge breaking



**TOP VIEW**



**DETAIL**

#### 1....**TOOLS, MATERIALS AND EQUIPMENT**

Before commencement of the work, ensure that the following tools, materials and equipment is available on site:

2x brooms, 2x shovels, 2x picks, 2 x squeegees, SS60 Stablemix Anionic Bitumen Emulsion (sourced from approved supplier), at least one 200 Liter drum for mixing, two wheelbarrows, Crusher dust/sand (sourced from approved supplier and pre-approved by the Engineer), 1x 25 Liter bucket, 1 x 20 Liter bucket, 1 x 5 Liter bucket, bags of cement (SABS approved product and pre- approved by Engineer). G1/G2 Crusher runn material or G5 material (sourced from approved supplier and pre- approved by the Engineer), 2x hand stampers and/or 1 x wacker.

#### 2....**UNIFORM AND CLOTHING REQUIREMENTS**

Gumboots, Safety shoes overalls etc. should be worn when performing the work.

#### 3....**METHOD**

- Excavate and remove loose material from hole and square off sides (top view).
- **Base layer**

##### **D<sub>1</sub> <50mm**

Fill base layer with imported G5 approved material .

##### **D<sub>1</sub> >50mm**

Fill base layer with imported G1 Crusher runn approved material unless otherwise instructed by the Engineer..

Compact the material with a hand stamper or wacker, depending on the site, position of pothole and existing road layers.

- Fill D<sub>2</sub> with Slurry Surfacing (6-8mm)  
or: Apply SS60 as tack coat and to seal edges and use Coldpatch material to fill D<sub>2</sub>(>8mm).

EVALUATION OF QUOTATION	<b>FUNCTIONALITY SCORING</b>																								
	The below mentioned criteria regarding functionality are required for responsiveness. If the minimum of 12 points is not scored for functionality the proposal will be rejected.																								
	A bidder that scores less than 12 points in respect of functionality will be disqualified. If any criterion is rated zero points, the tenderer will be rejected, even if the required 12 out of 20 points are achieved.																								
	NO.	DESCRIPTION	WEIGHTS	MINIMUM SCORE																					
	1.	<ul style="list-style-type: none"><li>The service providers experienced and track record of similar or relevant works 1-2 years = 3 points 3 -5 years =5 points 6 years plus = 10points</li></ul>	10																						
2.	<ul style="list-style-type: none"><li>Available resources and equipment to execute this project.</li></ul>	10																							
	TOTAL	20	12																						
	All quotations received will be evaluated on the 80/20 point scoring basis. The 80 points will be for Price and 20 points are for Broad Based Black Economic Empowerment (BBBEE) for attaining the BBBEE status level of contribution in accordance with the table below:																								
	<table><tr><th>BBBEE Status level of contributor</th><th>Number of points(80/20 system)</th></tr><tr><td>1</td><td>20</td></tr><tr><td>2</td><td>18</td></tr><tr><td>3</td><td>16</td></tr><tr><td>4</td><td>12</td></tr><tr><td>5</td><td>8</td></tr><tr><td>6</td><td>6</td></tr><tr><td>7</td><td>4</td></tr><tr><td>8</td><td>2</td></tr><tr><td>Non –complaint contributor</td><td>0</td></tr><tr><td></td><td></td></tr></table>			BBBEE Status level of contributor	Number of points(80/20 system)	1	20	2	18	3	16	4	12	5	8	6	6	7	4	8	2	Non –complaint contributor	0		
BBBEE Status level of contributor	Number of points(80/20 system)																								
1	20																								
2	18																								
3	16																								
4	12																								
5	8																								
6	6																								
7	4																								
8	2																								
Non –complaint contributor	0																								
OTHER DOCUMENTS REQUIRED:	<ul style="list-style-type: none"><li>Original, valid tax clearance certificate</li><li>Company registration documents</li><li>Copies of ID’s of shareholders</li><li>Completed MBD 4, MBD 6.1,MBD 8 and MBD 9</li><li>Copy of latest municipal account</li><li>Price schedule (fixed prices including Vat)</li></ul>																								

<b>CLOSING DATE AND TIME</b>	Wednesday 19 September 2012 11:00
<b>VALUE OF CONTRACT</b>	The value of this contract will not exceed R200 000.00 for a period of six (6) months.
<b>COMPULSORY BRIEFING SESSION</b>	Will be held <b>on Friday 14 September 2012 @10:00</b> at the <b>Flip Uys Boardroom</b> , Civic Centre, Krugersdorp.
<b>SUBMISSION OF QUOTES</b>	Tender box 1 Reception Desk of SCM Unit Upper Level West Wing Civic Centre Krugersdorp
<b>ENQUIRIES:</b>	Johan Britz @ Cell: 082 448 5218

**Conditions:**

- All prices quoted must be **inclusive of VAT**.
- All prices submitted must be fixed prices for the period of the quotation.
- If the price schedule is not signed the quotation will not be considered.
- No tipp-ex or correction fluid to be used on the quotation documentation- will lead to instant disqualification.
- Quotations completed in pencil will be regarded as invalid.
- All prices quoted must be valid for sixty (60) days.

NAME OF THE BIDDER: .....

CONTACT PERSON: .....

TEL/ CELL NO: .....

FAX NO: .....

\_\_\_\_\_  
SIGNATURE OF BIDDER

\_\_\_\_\_  
CAPACITY OF BIDDER