

MOGALE CITY LOCAL MUNICIPALITY



THE CONTRACT:

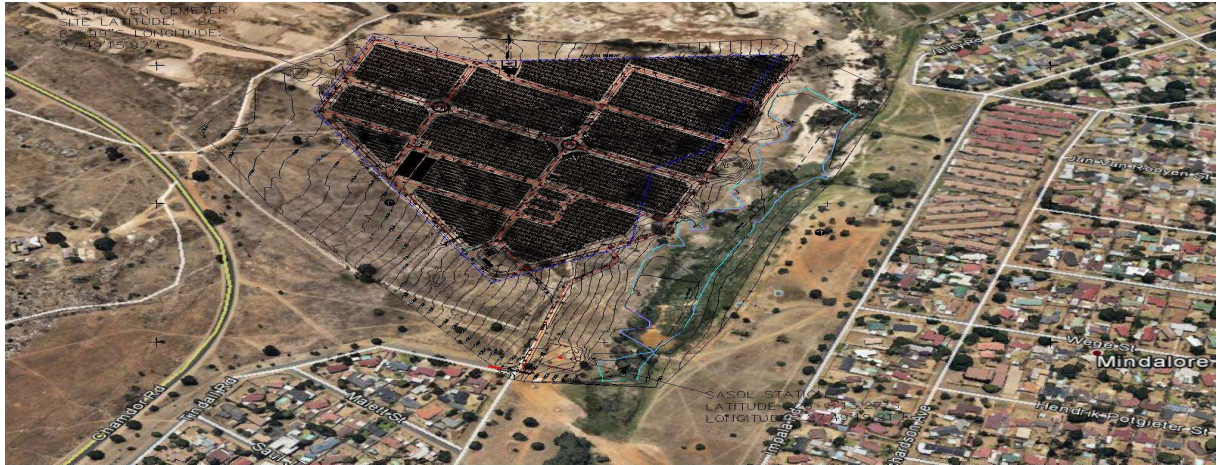
PART C4: SITE INFORMATION

Municipality 1		Municipality 2	
Municipality 3		Contractor	

C4 SITE INFORMATION

C4.1. Site Works

Access to the site is via Chamdor Road driving towards Kagiso, then turn left into Thornton Street and immediately into Tindall Street. The approximate mid-point coordinates (Google Earth) of the site are 26° 8'5.47"S 27°49'14.81"



C4.2 Nature of Ground and Subsoil Details

Based on the 1:250 000 2626 West Rand Geological map, an extract of which is attached below, the site is located on Portion 182 of the Farm Witpoortjie 245 IQ which is underlain by rock units of the Government Subgroup, West Rand Group of the Witwatersrand Supergroup. The rock sequence is comprised of quartzite, greywacke, conglomerate and shale.

Frequently, the rocks mentioned, or their weathered derivatives, are overlain by transported Quaternary deposits including alluvial sands and pedogenics, mainly as ferricrete.

The study area is mantled in many places by unconsolidated material deemed to be recent deposits (24 Ma and younger). The material varies in thickness, sedimentological and geotechnical properties:

Municipality 1		Municipality 2	
Municipality 3		Contractor	

C4.3 Layout and Topography

The proposed development covers 14.58Ha. The topography of the site in the east from 1734 m.a.s.l and peaks in the west of the site range (1766 m.a.s.l). The general slope of the site is 7 %, as determined from the highest and lowest point on site (see figure2 and annexure B). The variation in relief is due to the weathering of the resistant sandstone and man-made excavations.

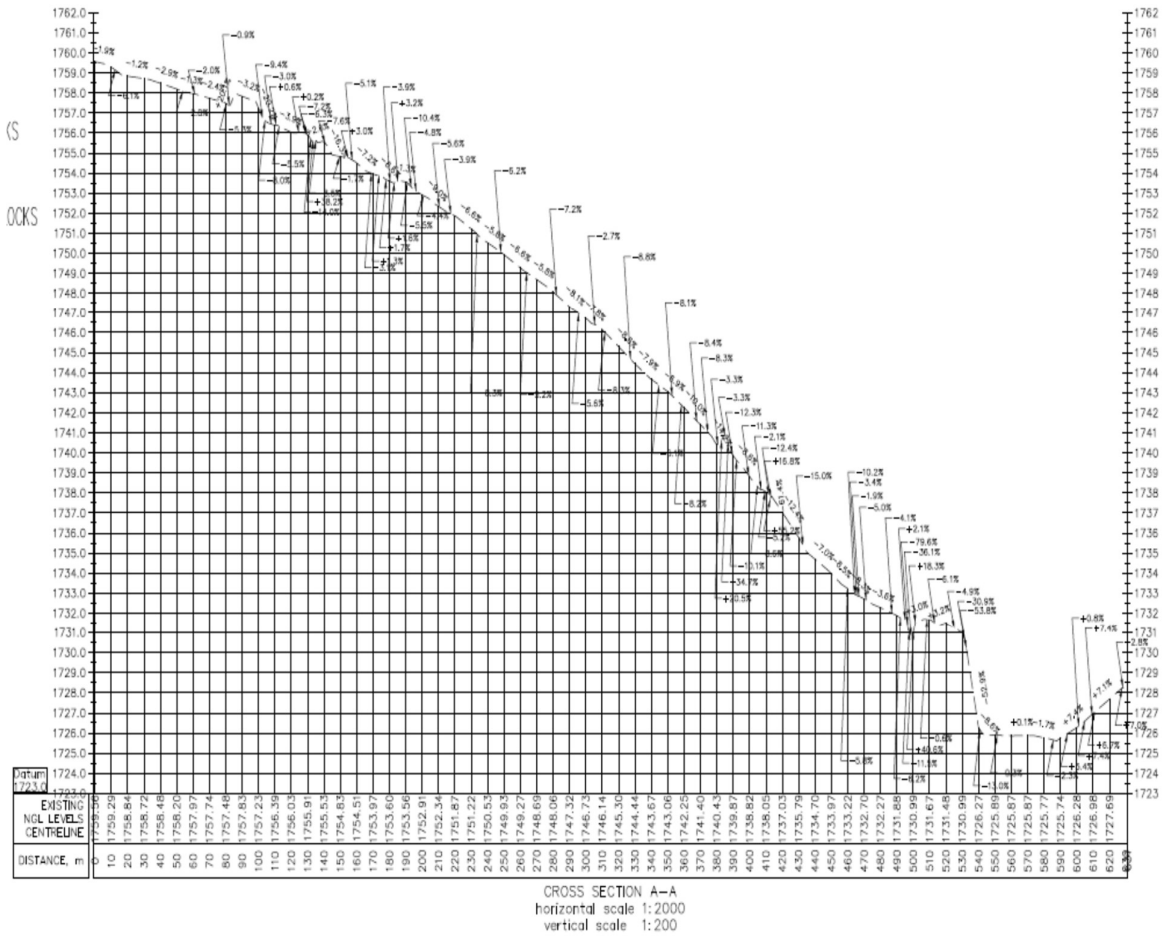


Figure 2: General Site gradient

Municipality 1		Municipality 2	
Municipality 3		Contractor	